

ROAD DIST. NO.	STATE	F.A. PROJECT NO.	FISCAL YEAR	SHEET NO.
3	FLA.	(BRS-4939-4)		

This right of way map when recorded is an instrument of conveyance, transferring in accordance with the Florida Statutes 337.29 all right, title, and interest of the Florida Department of Transportation in the road, street, highway, set forth on this map to Martin County.

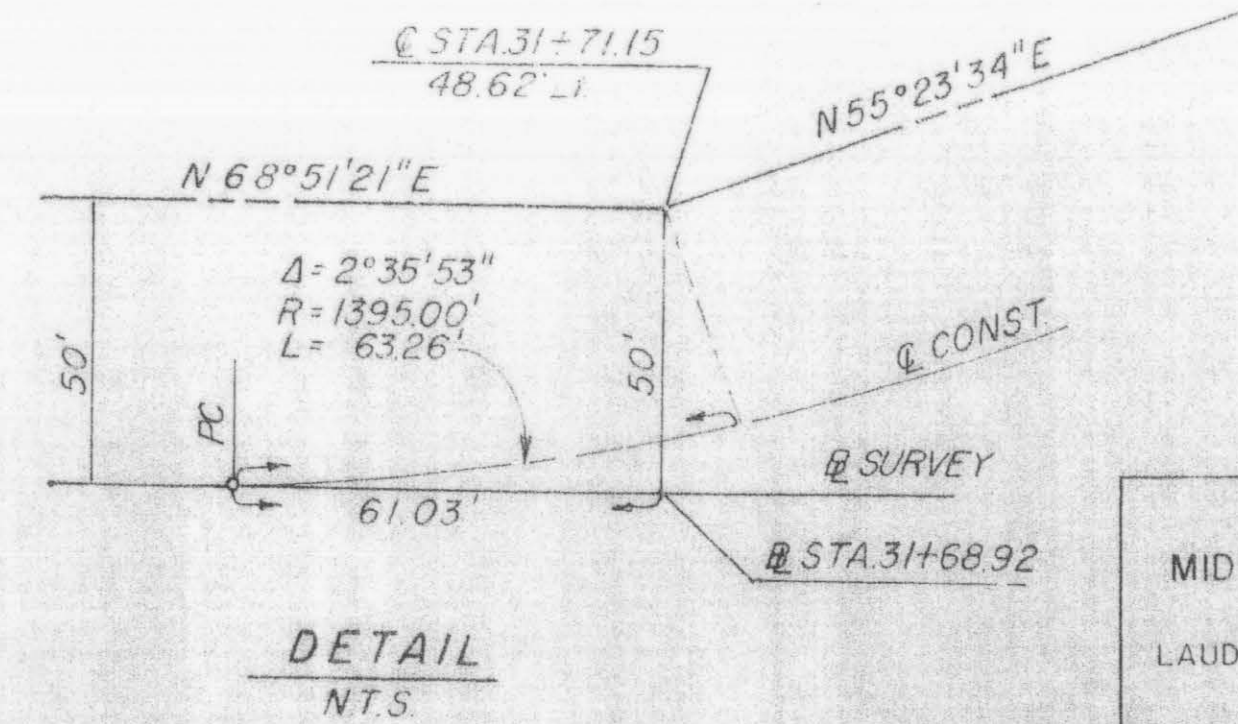
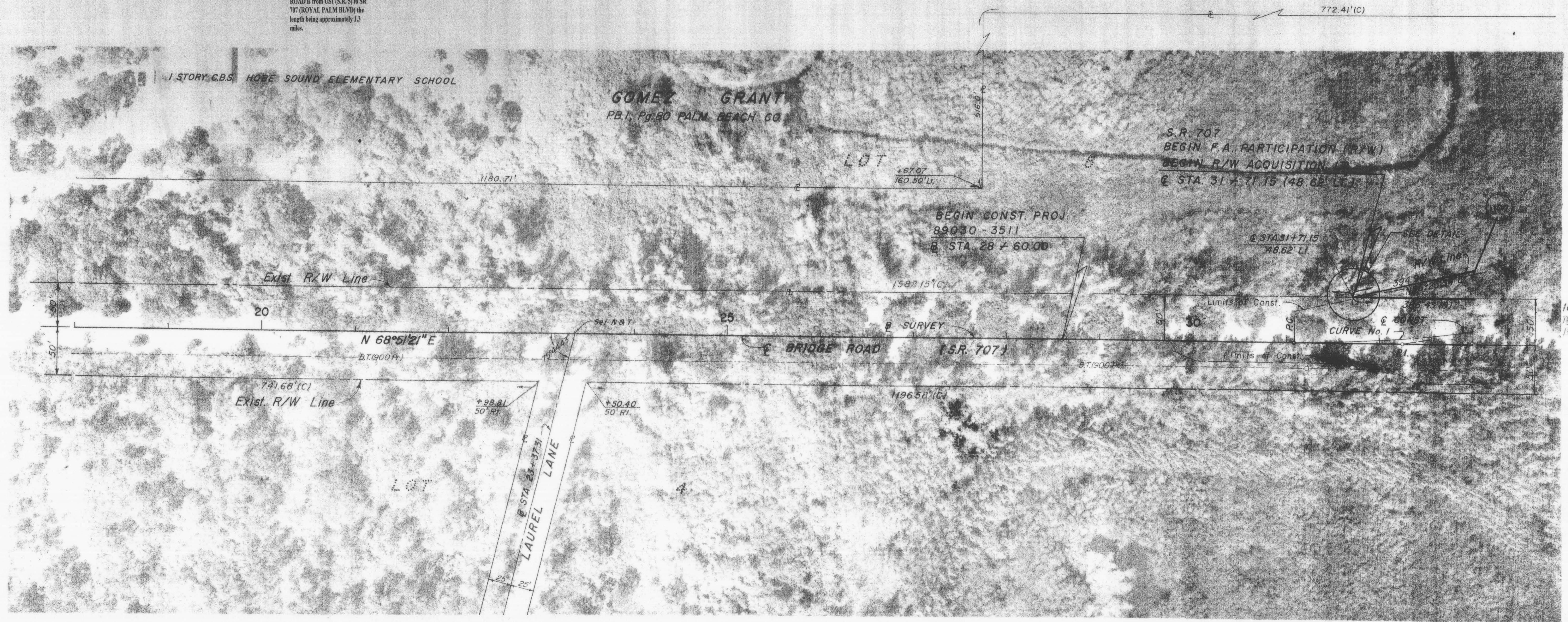
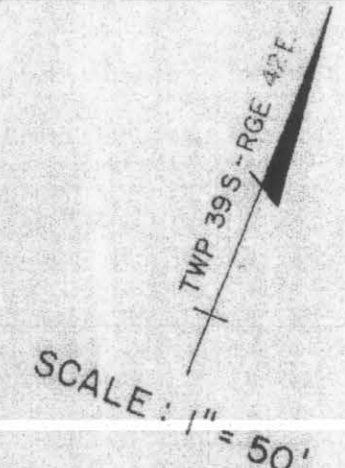
Recorded in Public Records of Martin County, Florida, this _____ day of _____, A.D. 2012, in Road Plat Book _____, Page _____.

Clerk of the Circuit Court
Martin County, Florida

The limits of this roadway transfer for Section 89030-2511 BRIDGE ROAD is from US1 (S.R. 5) to SR 707 (ROYAL PALM BLVD) the length being approximately 1.3 miles.

CONST. CURVE DATA

CURVE No. 1
 P.I. Sta. 32+24.14 = @ Survey Sta. 32+24.14 (0' Lt.)
 $\Delta = 9^{\circ}31'38''$ Lt.
 $D = 4^{\circ}06'26''$
 $T = 116.25'$
 $L = 231.96'$
 $R = 1395.00'$
 $e = .033$ Ft./Ft.
 P.C. Sta. 31+07.89 = @ Survey Sta. 31+07.89 (0' Lt.)
 P.T. Sta. 33+39.85 = @ Survey Sta. 33+38.79 (19.24' Lt.)



DETAIL
N.T.S.

PREPARED BY
MID SOUTH ENGINEERING CO.
 CONSULTING ENGINEERS
 LAUDERDALE-BY-THE-SEA, FLORIDA

REVISION	BY	DATE
Remove F.A. No.	MLM	11-8-83

BRIDGE ROAD 11-15-83

STATE OF FLORIDA
 DEPARTMENT OF TRANSPORTATION

RIGHT OF WAY MAP

STATE ROAD No. 707 MARTIN COUNTY

DRAWN	M. Dubovys	8/1/80	APPROVED BY	D.R. Jolley	DATE	8-3-80
TRACED						
CHECKED	B. Flaherty	8/1/80				
COMPARED						
INDEXED						

SECTION 89030-2511 SHEET 3 OF 4